

# MAG - Europe's most bestselling work lights even further improved

// The rechargeable handheld work lights everybody knows - and loves! With significantly improved light output, battery upgrade and even more functionality, the popular MAG work lights offer great value in every workshop operation.

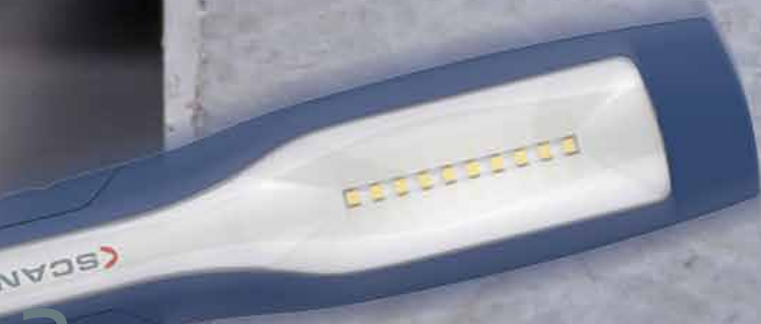
The MAG series consist of universal and powerful multipurpose work lights that all professional users must have!

- Significantly improved with higher lumen output
- Integrated work light and flashlight functionality in one
- Strong built-in magnetic holders and retractable hooks for handsfree operation
- New stepless dimmer function

ORIGINAL  
SCANGRIP



SINCE 1906



3  
years  
warranty

PATENT PROTECTED

## // Updated and more powerful than ever

Taking advantage of the latest high performance LED technology, the MAG range comprises extremely powerful work lights providing significantly improved light output. Compared to the previous MAG 3 and MINI MAG, the new MAG PROs are upgraded to IP54 and have a new design with battery indicator on front.

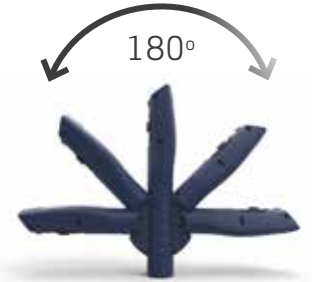
## // Multipurpose with cool design

The characteristic and elegant design of the MAG hand lamps provides an ergonomic and user-friendly grip. Place anywhere you want with the strong built-in magnetic holders and retractable suspension hooks to obtain complete flexibility. The lamp head is flexible and tilts up to 180 degrees.

## // Stepless dimmable



MAG PRO, MINI MAG PRO and MAG PEN 3 are upgraded with a stepless dimmer function in the range of 10% to 100% that enables you to adjust the light output to the work task.



MAG

03.5400

Work light with SMD LEDs and spotlight providing 300 lumen

EU DESIGN PATENT  
2954123



MAG PRO

03.5690

Work light with COB LEDs and spotlight providing 600 lumen

EU DESIGN PATENT  
2954123



MINI MAG PRO

03.5692

Work light with COB LEDs and spotlight providing 200 lumen

EU DESIGN PATENT  
3451038



MAG PEN 3

03.5116

Pencil work light with COB LEDs and spotlight providing 150 lumen

EU DESIGN PATENT  
4070035



## // Rechargeable inspection penlight

Upgraded with the highly efficient COB LED technology, MAG PEN 3 provides powerful illumination both from the lamp head and precision top light.

The design is compact allowing access in the most inaccessible places. It comes with built-in magnets both in the turnable clips and at the bottom for flexible positioning.

# UNIFORM - *Extremely durable work lights*

// Upgraded to highest possible performance

SCANGRIP is introducing upgraded and improved versions of the entire UNIFORM work light series.

The COB LED strip lights provide a unique, powerful and completely uniform illumination which is ideal for all demanding work operations.

The entire series has also been upgraded to IP65.

- Rechargeable COB LED work light series
- Completely uniform and powerful illumination
- Extremely durable and sturdy
- Waterproof, IP65
- Rechargeable with USB cable



**3**  
years  
warranty



## UNIFORM

03.5407

Work light with top flashlight providing up to 500 lumen

### Extremely durable work lamp

In this product range UNIFORM is the big brother offering all the functionality you can dream of. Soon it will become your favourite, multifunctional work light. Extremely durable and powerful.

An intelligent battery indicator at the front keeps you informed about the battery level. 2-step operating option:

Step 1 = 100%, step 2 = 50% light output.

EU DESIGN  
PATENT  
2954123

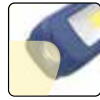
Slim charging  
base for easy wall  
mounting





## UNIPEN

03.5420



Pencil work light providing up to 150 lumen with top flashlight

Small and handy shape, supplied with pocket clip and 2-step operating option

EU DESIGN PATENT 3451038



ONLY 13mm

## MINIFORM

03.5404



Pocket-sized, ultra-slim work light with top flashlight providing up to 200 lumen

With comfortable and ergonomic grip and 2-step operating option

EU DESIGN PATENT 5597010

Flexible lamp head tilts up to 180 degrees. Supplied with a strong built-in magnet and a turnable sturdy hook designed to fit the work belt.



## SUPERFORM

03.5406

Sturdy work light with 5 m cable providing 750 lumen

Outperforming traditional fluorescent work lights

EU DESIGN PATENT 2954123



## UV-FORM

EU DESIGN PATENT 3451038

03.5408

Work light with UV-top light (400 nm) providing up to 250 lumen



UV-FORM is a rechargeable LED work light with powerful 1.8 W UV-light on the top. The most powerful UV-light on the market. Basically you get a universal indispensable work light and UV detection in one, and at the same time it replaces special UV detection lights.

The ultraviolet light is intended for leak detection in air-conditioning systems by means of trace elements. Also useful for leak detection of larger, complex refrigeration/freezing appliances, process cooling systems, heat pump systems etc.

# SLIM - Only 3-in-1 slim light on the market

// The SCANGRIP SLIM light series provides a true three-in-one, flexible and multifunctional work light for all kinds of application areas.

- 3-in-1: inspection light, work light and flashlight in one lamp
- Extremely powerful illumination up to 500 lumen with a powerful flashlight function
- Ultra-slim and compact design
- Strong built-in magnet and hook for flexible positioning
- Choose between 2 light settings (50 % or 100 %) for maximized operating time
- Rechargeable up to 6 h operation time



3  
years  
warranty

PATENT PROTECTED



### // Ultra-slim light for inspection

The ultra-thin, compact design only  $\varnothing 9$  mm allows inspection in even the most inaccessible and narrow work areas. This makes the SLIM lights ideal for very demanding and difficult inspection jobs.



### // Work light in pocketsize

The 2 new SLIM lights are designed with a 100% foldable body. When fully folded the lamp can be used as a traditional handheld work light. In folded position, the SLIM is reduced to pocketsize - compact and portable to take with you everywhere.



### // Flashlight function

The powerful 100 lumen spot light of the SLIM lights provides you with a flashlight function. As a unique feature, never seen before, SLIM can be used as flashlight when the lamp is folded, providing a powerful flashlight with a handy, firm grip.



EU DESIGN  
PATENT  
3451038



#### MINI SLIM

03.5610

Ultra-slim 3-in-1 inspection lamp with spotlight providing up to 200 lumen



#### SLIM

03.5612

Ultra-thin 3-in-1 inspection lamp with spotlight providing up to 500 lumen



# ULTRA SLIM inspection hand lamps

---

// The sophisticated and streamlined LINE LIGHT inspection hand lamps are made in Denmark, and present a golden example of our ability to push back the boundaries of LED lighting creating work lights with optimal performance, extreme durability and lots of bright functionalities.

- Sturdy and waterproof, IP65
- Ultra-slim design (ø25 mm) allows inspection in even most inaccessible places
- Flexible positioning with adjustable hook with magnet
- Flexible gooseneck fixtures available as optional accessories

ORIGINAL  
SCANGRIP



SINCE 1906

MADE IN DENMARK

3  
years  
warranty

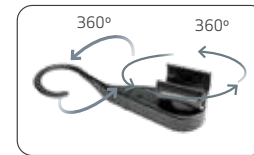
PATENT PROTECTED



EU DESIGN  
PATENT  
4070035



Both lamps are delivered with adjustable hook with clip holder and magnet



**NEW**

Upgraded version

**LINE LIGHT C+R**

03.5243

Inspection work lamp with DUAL SYSTEM and top spotlight providing up to 900 lumen



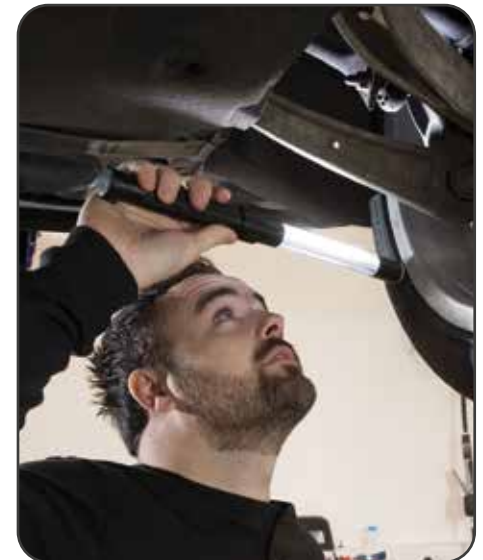
**NEW**

Upgraded version

**LINE LIGHT R**

03.5244

Rechargeable inspection work lamp with spotlight providing up to 600 lumen



The very slim design with a diameter of only 25 mm makes it possible to illuminate even hard to reach compact areas.

**DUAL 2 in 1 SYSTEM**





# LINE LIGHT *bonnet light*

// Superior bonnet light on the market

- Improved light output (1400 lumen)
- Dust and waterproof, IP65
- Most slim and compact bonnet light on the market
- Extremely low weight, less than 1000 g
- Choose between 2 light settings (50 % or 100 %) for maximized operating time

## **DUAL** 2 in 1 **SYSTEM**

DUAL SYSTEM is new intelligent and innovative lighting functionality.

The new BONNET LIGHT is with DUAL SYSTEM which means both rechargeable and with 5 m rubber cable offering unlimited application possibilities and complete freedom. Very easily you change over: it takes only a second to connect the power cable – or disconnect when needed.



ORIGINAL  
SCANGRIP



SINCE 1906

MADE IN DENMARK

**3**  
years  
warranty

PATENT PROTECTED

EU DESIGN  
PATENT  
4070035



## // Illuminates the entire engine bay

The BONNET LIGHT provides you with an extremely bright and powerful illumination of the entire engine bay.

Supplied with an adjustable telescopic holder with soft-padded hook ends providing a firm and scratch-free grip on the vehicle. The holder is compact and takes up less space in storage.



Without cable the bonnet light might also to be used as a large inspection lamp.



**NEW**

Upgraded  
version

### LINE LIGHT BONNET C+R

03.5240

## DUAL 2 in 1 SYSTEM



Inside the cabin the BONNET LIGHT may also be used as work light either mounted by the telescopic holder or mounted onto the windscreen by the flexible arm with suction cup.



## // FLEXIBLE suspensions

A range of accessories are available to position the LINE LIGHT lamps



### GOOSENECK

03.5219

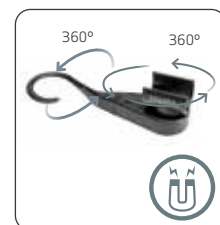
20 cm flexible arm  
with clip holder and  
ø60 mm suction cup



### GOOSENECK

03.5218

20 cm flexible arm  
with clip holder and  
ø60 mm magnet



### HOOK

03.5312

Adjustable hook  
with clip holder  
and magnet

# NOVA BONNET - *Powerful bonnet light providing maximum flexibility*

// The NOVA BONNET light provides you with increased flexibility and bright illumination of the engine bay. With the NOVA BONNET, you will have a bonnet light and a flexible NOVA R hand lamp in one single solution.



Use the NOVA BONNET inside the cabin



Use NOVA R separately for inspection work



**3**  
years  
warranty

PATENT PROTECTED

## // Rechargeable and dimmable COB LED work light

Easily mount the NOVA R on the bonnet light via the enclosed bracket, slide it from side to side to position the light and adjust the light output or simply use the hand lamp for inspection work.

Featuring the latest high-performance COB LED technology, NOVA R provides up to 2000 lumen with a uniform and even illumination. The light dimmer function makes it possible to adjust the light into five different levels, and due to the upgraded battery capacity, you can use the lamp for up to 20 hours depending on the light output.

The NOVA BONNET is supplied with an adjustable telescopic holder (1.2-1.7m) with soft-padded hook ends providing a firm and scratch-free grip on the vehicle. The holder is compact and equipped with a metal bracket. The powerful integrated magnets of NOVA R provides flexible mounting on the bracket. Inside the cabin, the NOVA BONNET may also be used as work light mounted by the telescopic holder.

## // High flexibility

The simple and user-friendly design makes it easy to mount and dismount the NOVA R, which allows you to use the lamp for inspection work. NOVA R is easy to carry and is ergonomically designed for a good grip on the handle.



Mount and dismount NOVA R on the bracket



NOVA BONNET

03.5457



NOVA R 1000 / 2000 lumen

## // ACCESSORIES

Buy accessories separately and transform your NOVA R handlamp into a flexible bonnet light.

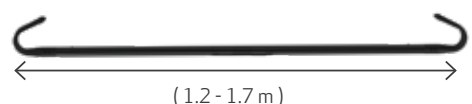
### BRACKET

03.5760



### BONNET HOLDER

03.5314



# HEADLAMPS *for professionals*

// Pursuing the vision of designing innovative work light for the professional end-user

- Illuminates your entire workspace
- Rechargeable
- Long duration time
- Easy to operate
- Sensor function with touchless on/off switch

As opposed to all other headlamps providing a beam of light, the new I-VIEW and ZONE headlamps are designed to provide optimum work light illuminating your entire work area.

Supplied with the newest COB LED technology, both headlamps provide an extremely powerful illumination which spreads the uniform light to the maximum and lightens up your entire field of view.

You avoid turning the head to illuminate your actual workspace from a limited headlamp beam.

ORIGINAL  
SCANGRIP



SINCE 1906

3  
years  
warranty

PATENT PROTECTED

**NEW**

Upgraded version

## I-VIEW

03.5626

EU DESIGN PATENT  
2635946



### // Rechargeable I-VIEW with touchless sensor



I-VIEW is upgraded with the very newest rechargeable battery technology, providing extremely powerful illumination up to 400 lumen in a new modern design. When set on sensor mode I-VIEW is switched on/off only by waving a hand in front of the lamp.



It is supplied with stepless dimmer function for adjustable light output and a battery indicator. The design is ergonomic and lightweight for a perfect, comfortable fit, and the woven band is strong and adjustable. Dust and water-proof (IP65). As optional accessory, the SCANGRIP POWERBANK 03.5782 can be used for increased operating time.



### // Extend the operating time

SCANGRIP POWERBANK is specially developed for I-VIEW as an optional accessory which extends the total operating time to 5.5 hours at full power.

## ZONE

03.5426

EU DESIGN PATENT  
3451038



### // Rechargeable ZONE headlamp

The ZONE headlamp is designed to provide optimum work light illumination of the entire work area, like the I-VIEW.

ZONE is designed for professional use, it is sturdy and low weight of only 84 g. With its very attractive price, ZONE will become another SCANGRIP bestseller.

ZONE has been upgraded to provide 75/150 lumen.

STANDARD HEADLAMP



I-VIEW and ZONE HEADLAMPS



# NIGHT VIEW - *for work in the dark*

---

// New headlamp that keeps your night vision

- Designed for work in the dark
- Rechargeable with touchless sensor function
- Illuminates your entire work space
- Durable, sturdy and waterproof
- Switch between normal white light and red light



**3**  
years  
warranty

PATENT PROTECTED

## // Choose between white and red work light

The red light is intended for work in the dark and provides light without overexposing the retinas while at the same time keeping the eyes adjusted to the dark.

The red-light functionality is mostly known from the military to read maps on maneuvers at night, but is also needed in civilian professions for work at night, for instance on ships and offshore. On ships it is particularly useful on the bridge at night, because it preserves your night vision so you can work at the control panel. Headlamps with red-light mode are also well suited for security guards that work at night in dark surroundings.

## // Newest lighting technology

The NIGHT VIEW provides extremely powerful illumination which spreads the uniform light to the maximum and lightens up your entire field of view. You avoid turning the head to illuminate your actual workspace from a limited headlamp beam.

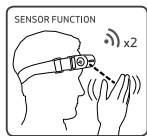
NIGHT VIEW is provided with the very newest rechargeable battery technology with extraordinary long duration, and sets new standards for professional work light. When set on sensor mode NIGHT VIEW is turned on/off only by waving a hand in front of the lamp. Thus, the light can easily be switched on/off, even when wearing thick gloves.



Keep your night vision

### NIGHT VIEW

03.5438



STANDARD HEADLAMP



NIGHT VIEW HEADLAMP



6000 K



632 nm

EU DESIGN PATENT  
2635946





# SOUND LED S - Audio work light

// Small and compact work light with integrated speaker

- Wireless sound control
- Handy and compact design
- Dust and waterproof, IP65
- Flexible positioning with built-in magnetic function



WIRELESS 



ORIGINAL  
SCANGRIP



SINCE 1906

3  
years  
warranty

PATENT PROTECTED

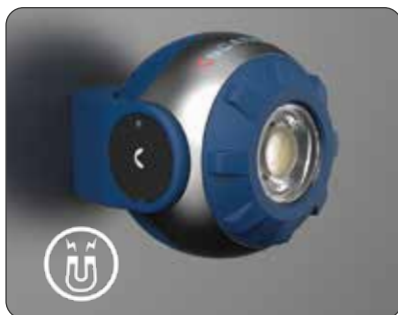
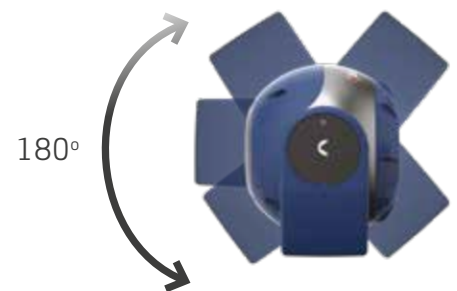
## // Rechargeable audio LED work light

Featuring the latest and unique COB LED technology, SOUND LED S provides high light output up to 600 lumen, with a uniform and even illumination. It is a handy and sturdy work light, easy to carry and always near at hand - ideal for the workplace.

With the integrated wireless function, you can easily control the music from your mobile device.

The flexible bracket supplied with a strong magnet enables you to position the lamp anywhere you want in the desired lighting angle.

It is dust and waterproof, IP65, and can be used for both indoor and outdoor work.



Bracket with built-in magnetic function



### SOUND LED S

03.5900

# STAR - Work light and floodlight in one

// STAR is the missing link between a work light and a floodlight. It is a new multifunction work light that does it all!

- Extremely powerful illumination, up to 1000 lumen
- Rechargeable up to 5 h operation time
- Waterproof IP65
- Ergonomic design for a comfortable, firm hand grip
- Flexible handle for multifunctional positioning and application
- Sturdy handle with built-in magnet
- Direct mounting on the SCANGRIP TRIPOD
- Durable housing made of shock-resistant plastic material
- Built-in powerbank



ORIGINAL  
SCANGRIP



SINCE 1906

**3**  
years  
warranty

PATENT PROTECTED

## // Multifunctional work light

STAR is designed to be the work light that does it all. The lamp is ergonomically designed to be used as a hand held work light. Extending the position of the handle, the lamp transforms itself to be a searchlight.

## // Handy floodlight

Due to the extremely powerful light output, STAR is also applicable for illumination of a larger working area, in spite of its small size compared to other floodlights. The handle is designed for direct mounting on the SCANGRIP TRIPOD.

## // Flexible positioning

Due to the flexible handle the STAR can stand in different positions to obtain the optimal lighting angle for a specific work task. The handle is also clickable in fixed position to serve as a hook for suspension. Using the powerful built-in magnet in the handle the STAR can be placed in flexible positions on any metalized surface.



EU DESIGN  
PATENT  
3451038



## // Powerbank

Built-in power bank with USB outlet to charge mobile devices.



Flexible positioning



STAR

03.5620



Position the light directly on the SCANGRIP TRIPOD up to 3 m

Handheld work light

